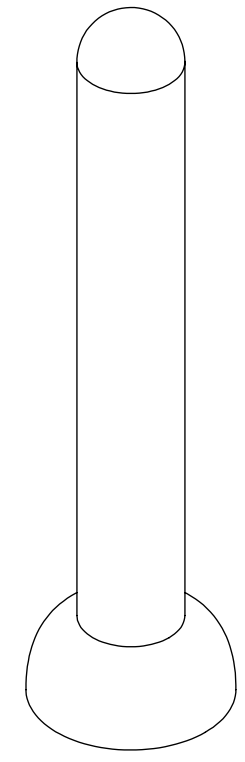
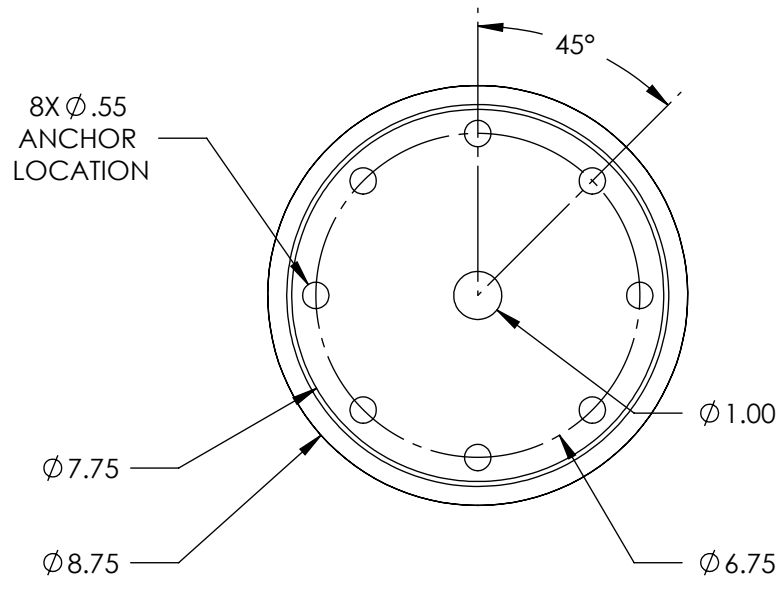
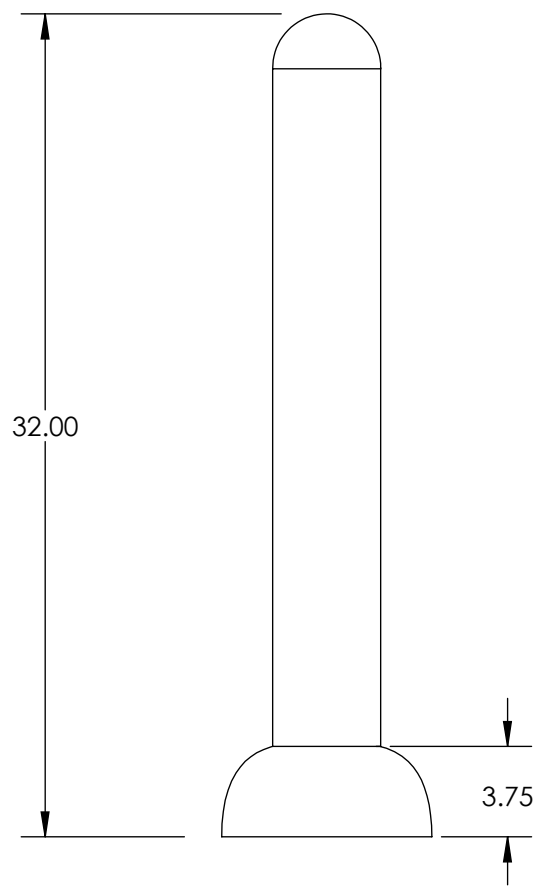
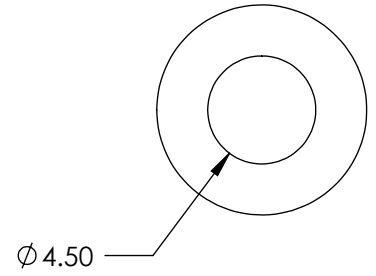


8 7 6 5 4 3 2 1

D
C
B
A

D
C
B
A



NOTES:

1. ALL DIMENSIONS ARE APPROXIMATE.
2. DIMENSIONS ARE TYPICAL FOR THE 48" DSB BOLLARD.
3. OPTIONAL HEAVY CAST BASE COVER SHOWN IN DRAWING.

DRAWN BY: G. FITCH

ALVARADO MFG.CO.INC.
 12660 COLONY STREET, CHINO, CA. 91710

PROPERTY NOTICE: NO USE WITHOUT PRIOR WRITTEN CONSENT

**DSB BOLLARDS - PLAN,
 ELEVATION, & FOOTPRINT
 [32" HIGH]**

SIZE B	NUMBER PEF-120	DATE 4/27/2010
SCALE: 1:8		UNLESS OTHERWISE SPECIFIED DIMENSIONS ARE IN INCHES
		SHEET 1 OF 1

8 7 6 5 4 3 2 1