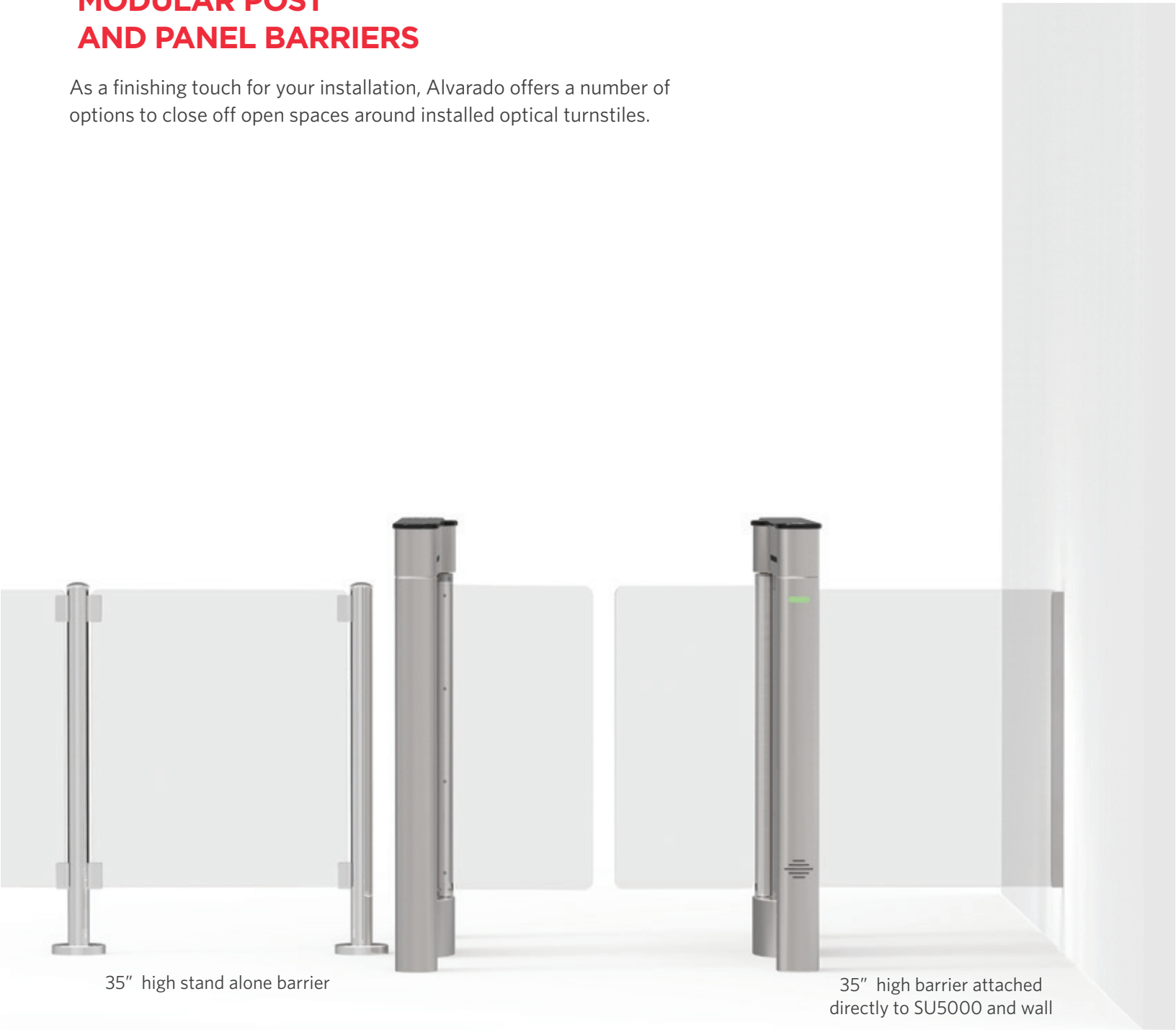


MODULAR POST AND PANEL BARRIERS

As a finishing touch for your installation, Alvarado offers a number of options to close off open spaces around installed optical turnstiles.



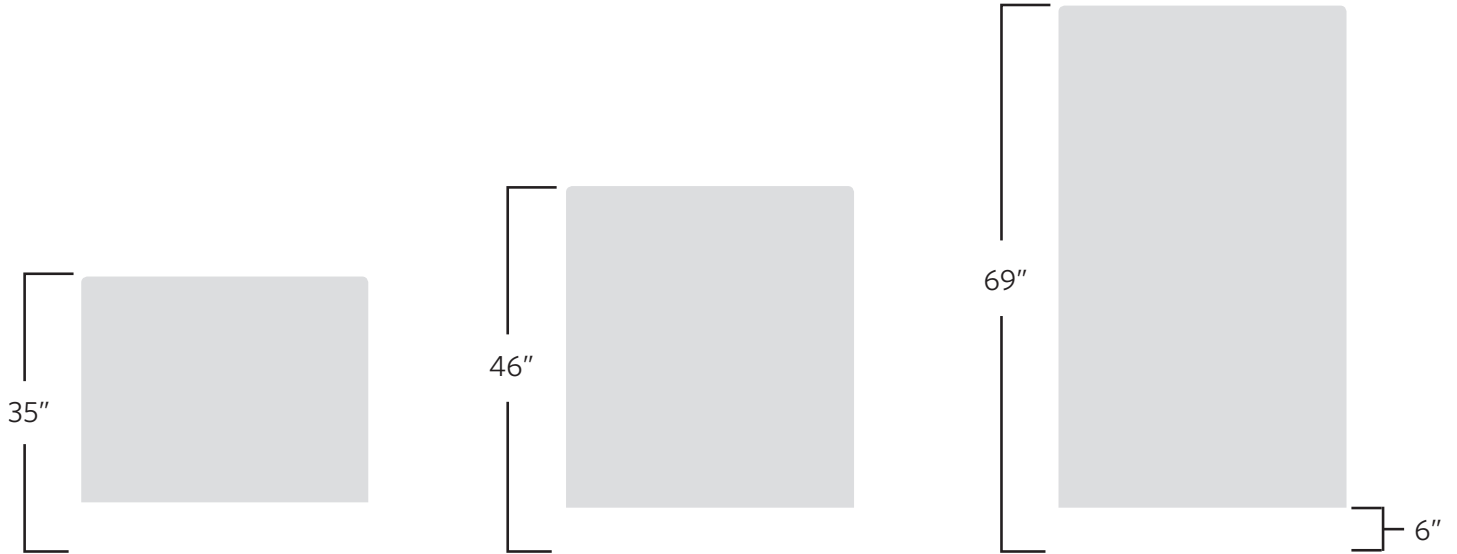
35" high stand alone barrier

35" high barrier attached directly to SU5000 and wall

QUICK GUIDE | MODULAR POST AND PANEL BARRIERS

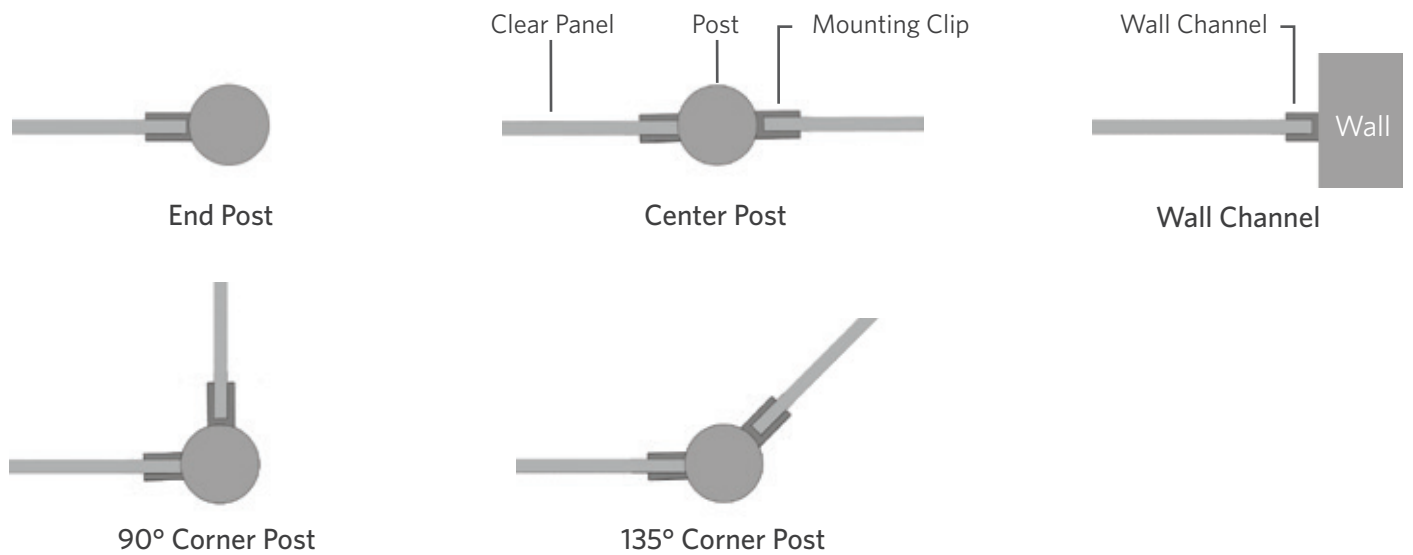
AVAILABLE BARRIER PANEL HEIGHTS

Panels come in three heights that match the standard barrier heights of our SU5000 turnstiles.



AVAILABLE POST CONFIGURATIONS*

Posts are available in a variety of configurations, providing flexible layout and installation options.



*Top down views shown

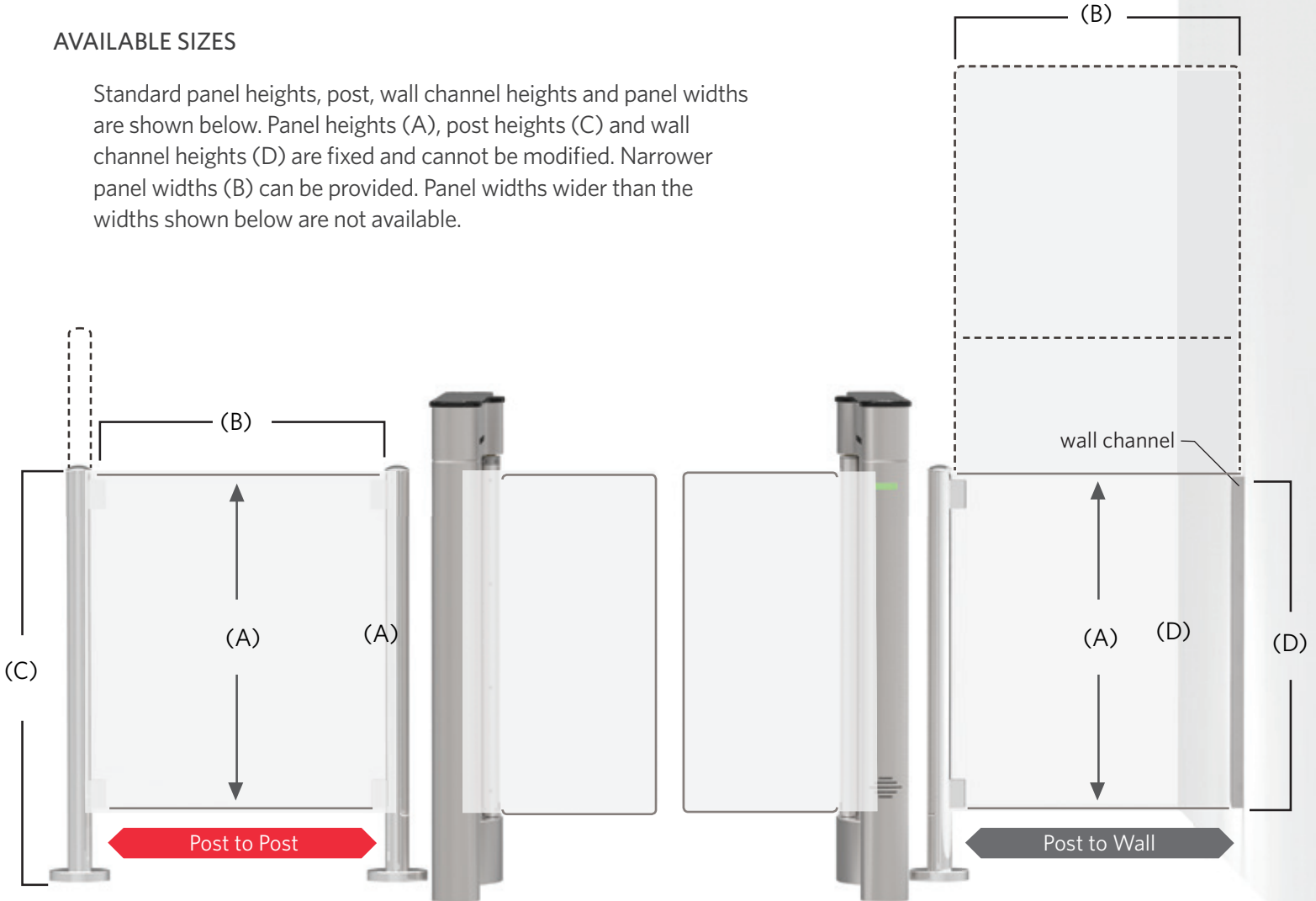
QUICK GUIDE MODULAR POST AND PANEL BARRIERS

OPTION 1: STAND ALONE BARRIERS

Barrier panels attach to modular posts installed next to the turnstile, rather than attaching directly to the sides of the turnstile.

AVAILABLE SIZES

Standard panel heights, post, wall channel heights and panel widths are shown below. Panel heights (A), post heights (C) and wall channel heights (D) are fixed and cannot be modified. Narrower panel widths (B) can be provided. Panel widths wider than the widths shown below are not available.



Post to Post		
Panel Height (A)	Panel Width (B)	Post Height (C)
35"	24" / 36" / 47"	35"
46"	24" / 36" / 47"	35"
69"	24" / 36" / 47"	48"

Post to Wall			
Panel Height (A)	Panel Width (B)	Post Height (C)	Channel Height (D)
35"	24" / 36"	35"	28.25"
46"	24" / 36"	35"	28.25"
69"	24"	48"	41.25"

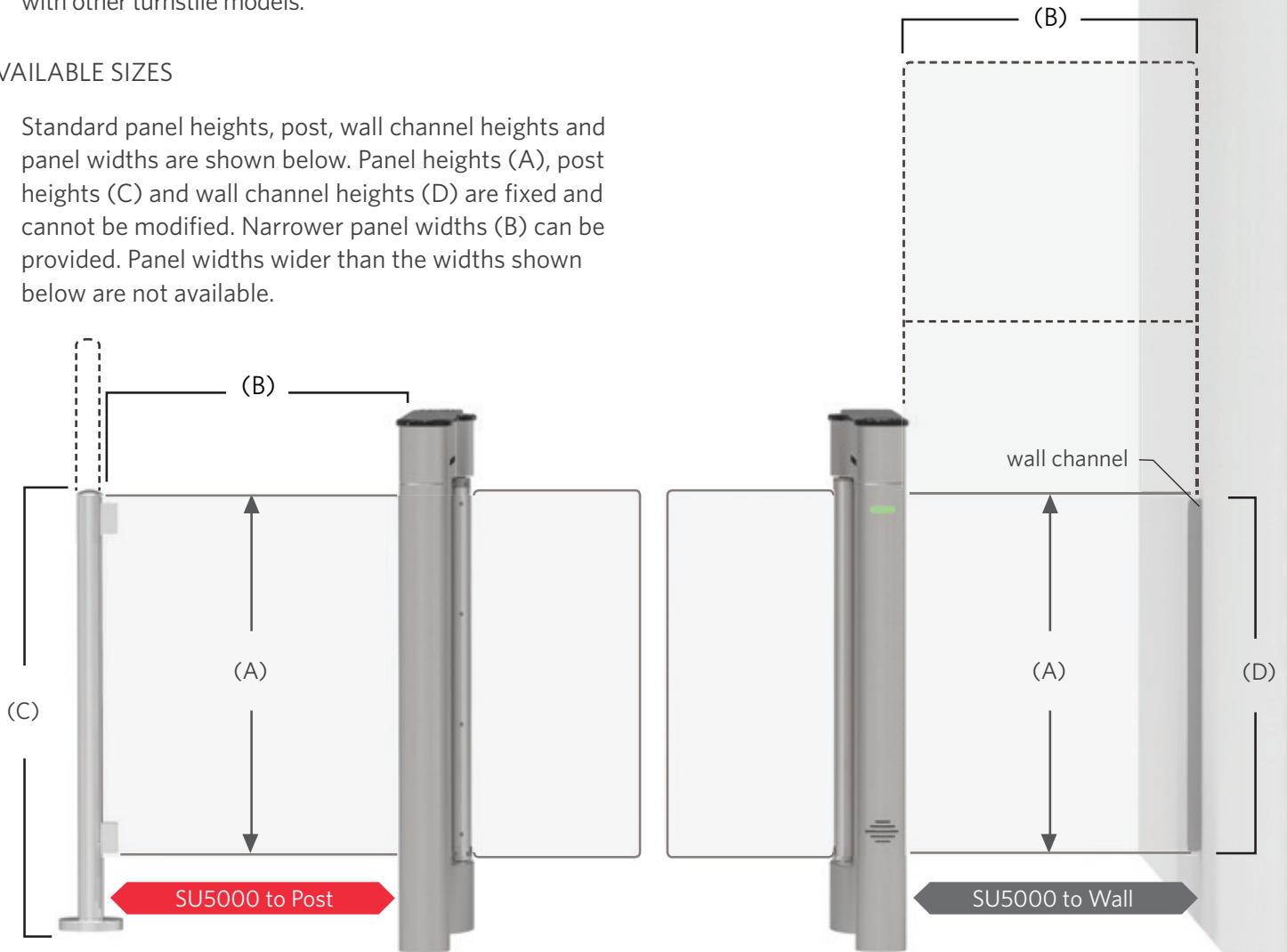
QUICK GUIDE MODULAR POST AND PANEL BARRIERS

OPTION 2: SU5000 ATTACHED BARRIERS

Alvarado also offers barrier panels that attach directly to SU5000 optical turnstiles. This option is not available with other turnstile models.

AVAILABLE SIZES

Standard panel heights, post, wall channel heights and panel widths are shown below. Panel heights (A), post heights (C) and wall channel heights (D) are fixed and cannot be modified. Narrower panel widths (B) can be provided. Panel widths wider than the widths shown below are not available.



SU5000 to Post		
Panel Height (A)	Panel Width (B)	Post Height (C)
35"	24" / 36"	35"
46"	24" / 36"	35"
69"	24"	48"

SU5000 to Wall		
Panel Height (A)	Panel Width (B)	Channel Height (D)
35"	24" / 36"	28.25"
46"	24" / 36"	28.25"
69"	24"	41.25"

QUICK GUIDE MODULAR POST AND PANEL BARRIERS

BARRIER SPECIFICATIONS

VOGUE POST



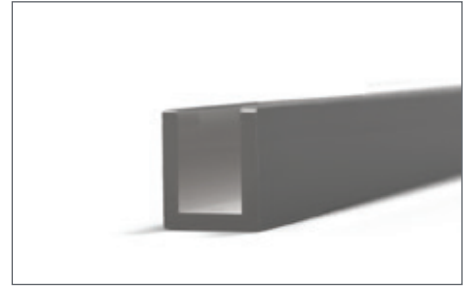
- Post diameter: 2.25"
- Base cover diameter: 5.5"
- Available finishes:
 - Satin stainless steel
 - Powder coated

CLEAR PANEL



- Cast acrylic
- Abrasion resistant coating
- Thickness: 0.5"
- Top corner radius: 1"
- No radius on bottom corners

WALL CHANNEL



- U channel depth: 0.75"
- Capped bottom

OPTION 3: INDIVIDUAL POSTS

Individual posts can also be used to close off small open areas. Available sizes and finishes are shown below.



VOGUE POST

- Height: 35" and 48"
- Post diameter: 2.25"
- Base cover diameter: 5.5"
- Press fit cap
- Available finishes:
 - Satin stainless steel
 - Powder coated

SPACE SAVER POST

- Height: 35"
- Base diameter: 2.25"
- Base cover diameter: 3.5"
- Press fit cap
- Available finishes:
 - Satin stainless steel
 - Powder coated

C POST

- Height: 36"
- Post diameter: 3"
- Base cover diameter: 5.5"
- Welded cap
- Available finishes:
 - Powder coated